

Visit the web version [here](#).

Felsenmeer newsletter - week 48 / 2017
Product announcement



Leave nothing to chance - Direct initial support thanks to efficient and solid localisation solution by FELSENMEER



Work accidents can be fatal, which is why timely alarming the emergency services is crucial. The faster and more accurate the information is transmitted, the higher the chance that the injured person will survive. Many questions need to be answered within a short time limit. In a worst-case scenario, first responders should arrive at the accident's location within two minutes. The injured person must be located within this tight time frame. In our alarm process there are two means of localisation: Outdoors there is GPS localisation and indoors the information is provided by our BEACON ECO.



BEACON ECO



BEACON ECO is based on a newly developed firmware and replaces its predecessor, the BEACON. BEACON ECO has several new features and use cases in the alarm process, including:



Improved transmission range setting



Simplified configuration



More energy efficient radio transmission



Five times increased typical service life



Creation of forbidden and permitted zones



Plant identification to separate neighbouring installations

Dual mode

The new beacon supports two modes of operation: BASIC and ECO mode. By default, the beacon runs in BASIC mode. Depending on the personal-emergency signal device being used, the beacon mode can be set. This is to keep compatibility with our older personal alarm devices. See the following comparison chart:

Mode	Compatibility	Transmission interval	Service life	Range setting
BASIC	GSM S series SHALOSH	Every 4 seconds	2 years typical	By touch button
ECO	SHALOSH ECO	Every 3 seconds	10 years typical	Using SERVICE-STICK or by touch button

BEACON ECO as a means of prevention



Thanks to the new features the BEACON ECO can also be used for other tasks. Besides providing localisation information, it can be used as a preventative measure. Setting up a forbidden or permitted zone will cause an alarm upon entering or exiting this zone. Alarms are triggered by the personal alarm device upon...

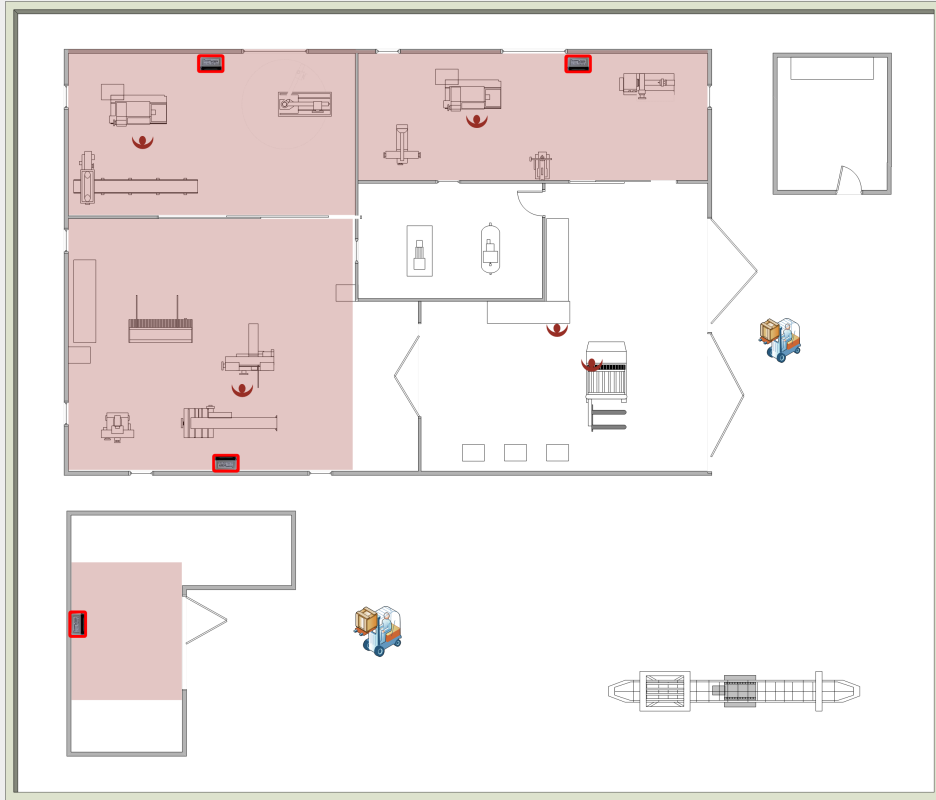
- being inside of any forbidden zone, or
- being outside of all permitted zones.

Setting up these zones correctly requires some practice. Using a layout plan is a good way to show overlapping zones. All relevant cases can then be exercised and adjusted as necessary. This feature can only be used with our SHALOSH ECO and requires the SERVICE-STICK for commissioning.

Example scenarios

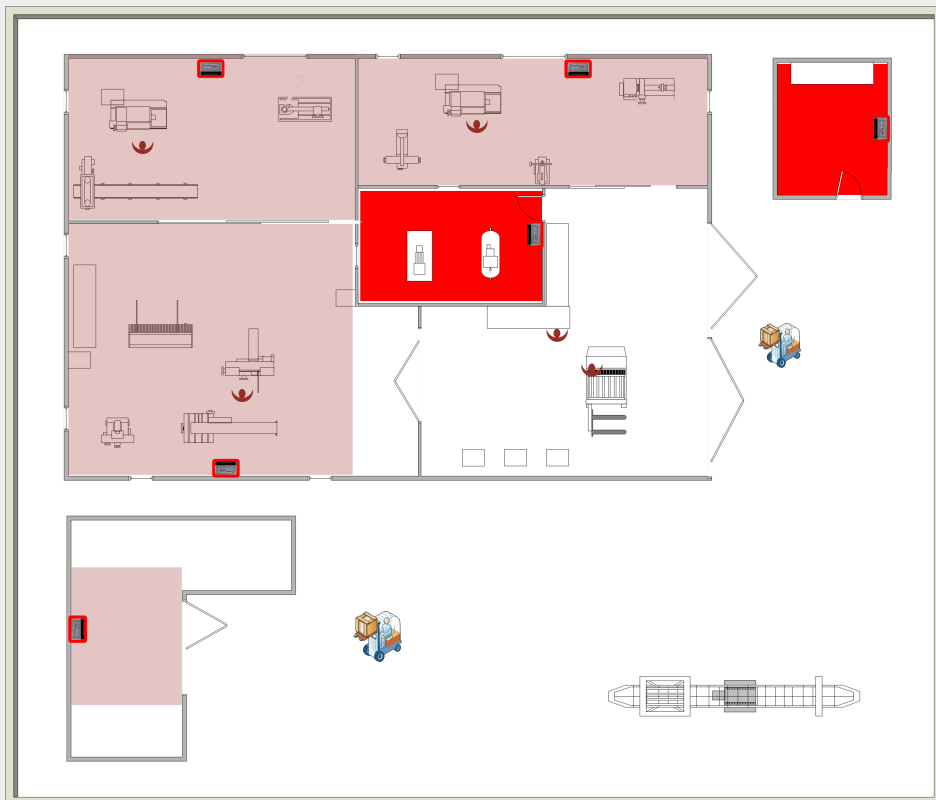
Indoor localisation

The beacons are installed in fixed locations where lone workers may be present. Installing beacons indoors not only makes sense in multi-storey buildings, but also if a large area is to be covered. An injured worker can be found and rescued quicker with the provided localisation information. The number of required beacons depends on the building layout.



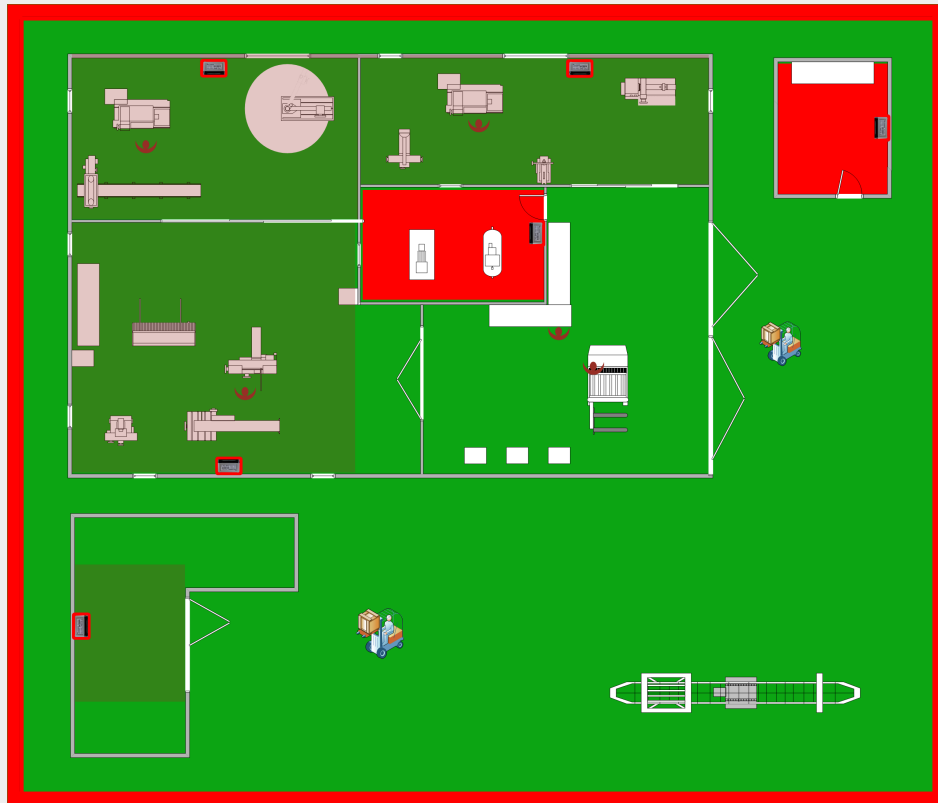
Forbidden zones

There may be areas where lone workers are not allowed to be. These areas can be defined using forbidden zones. In the example mentioned below we use two BEACON forbidden zones (highlighted in red). As soon as a lone worker enters one of these zones, an alarm is triggered.



Factory area zone

Taking it one step further, we added a permitted zone around the factory area. In this example, a lone worker may still not enter any of the forbidden zones (red). Additionally, an alarm will be triggered upon exiting the permitted zone (green).



SERVICE-STICK – the optimal tool

For planning, installation and maintenance work we recommend using the SERVICE-STICK. Your added benefits are:



Measuring the field strength of all FELSENMEER beacons



Updating BEACON ECO firmware



Configuring BEACON ECO



Updating SHALOSH ECO firmware



Configuring SHALOSH ECO



Creating config-files to configure multiple SHALOSH ECO devices

Commissioning BEACON ECO

We recommend using the designated batteries in our BEACON ECO. We use only this battery type in our BEACON ECO and BEACON EX:

- **Saft LS 14500 EX (LiSOCI2 3.6 V, size AA, 2.6 Ah)**

IMPORTANT: Upon removing the battery separator tab, BEACON ECO might send a “low battery” warning. This phenomenon occurs mainly if the batteries have been stored for a long time (passivation) or if cold batteries (< 10 °C) are inserted into a device at room temperature. It may take about 30 - 60 minutes for the warning to disappear, because...

- the battery has recovered from passivation,
- the temperature is measured correctly by the device and
- the “battery low” algorithm has finished calibration.

BEACON ECO is to be commissioned by trained personnel only. Observe ESD handling precautions.

Availability

The product BEACON ECO is now available from EU and CH stock. Delivery time is 3-4 working days.

Flyer

The BEACON ECO flyer is available in German, English, French and Spanish for download on our website. Click this button to get directly to the download page:

[Link to the flyers](#)

Scope of delivery

- BEACON ECO
- 2 x battery Saft Li-SOCI2 LS 14500EX 3.6 V, size AA, 2.6 Ah
- For download: User manual in German and English

Ordering information

Article no.	Product name
1201092	BEACON ECO
1104005	SHALOSH ECO
1201052	SERVICE-STICK
1201191	CIPOLLINO BEACON

Please place your order directly at info@felsenmeer.ch.

Next newsletter

Newsletter type: Corporate information

Newsletter type: Product announcement

Topic: **Opening times at Christmas and New Year**

Product name: **DEMO CASE**



Questions?

For further questions and feedback I am personally at your disposal.



Nedim Livadic
Head of Sales

Phone: +41 44 500 33 54
Fax: +41 44 500 33 51
Mobile: +41 76 431 33 54
E-Mail: nedim.livadic@felsenmeer.ch
Web: www.felsenmeer.ch

Felsenmeer AG
Opfikerstrasse 45
CH-8304 Wallisellen

you'll never work alone

Impressum:

Felsenmeer AG, Opfikerstrasse 45, 8304 Wallisellen

Newsletter [abbestellen](#), Icon pack by Icons8